



eCATALOGsolutions



BIM catalogs.net



PARTsolutions



Create Your Individual 3D PDF Datasheet



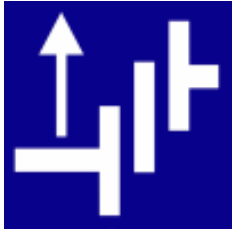
Learn How to Create Your Mechanical Product Catalog



Learn How to Create Your BIM Product Catalog



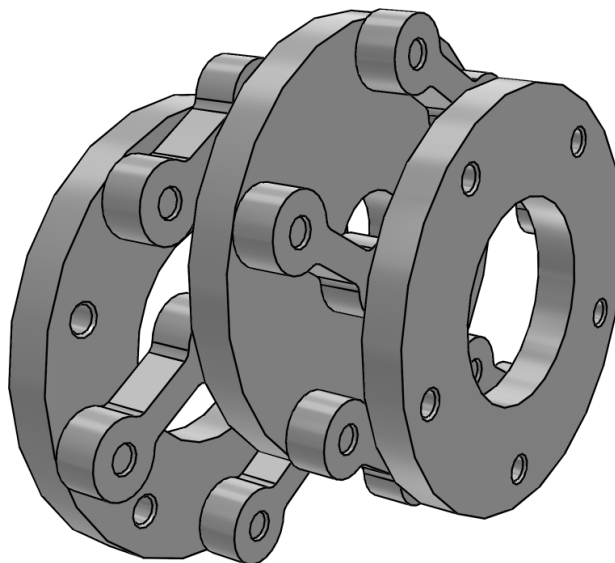
Reduce Your Costs in Engineering and Purchasing



SK 4.5.8/5

## 3D View

To activate the interactive 3D view, you must trust this document (see hint on the top) in Adobe Acrobat and click on the question mark.



Zoom

Moves you toward or away from objects in the scene when you drag vertically. You can also zoom with the hand tool by holding down Shift as you drag.



Pan

Moves the model vertically and horizontally only. You can also pan with the hand tool: Ctrl-drag.



Rotate

Turns 3D objects around relative to the screen. How the objects move depends on the starting view, where you start dragging and the direction in which you drag.

## 3D PDF DATASHEET



 **eCATALOG**solutions



 **BIM** catalogs.net



 **PART**solutions



Create Your Individual 3D PDF  
Datasheet



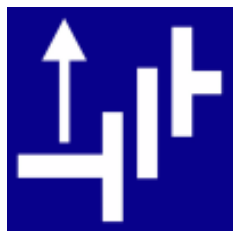
Learn How to Create Your  
Mechanical Product Catalog



Learn How to Create Your BIM  
Product Catalog



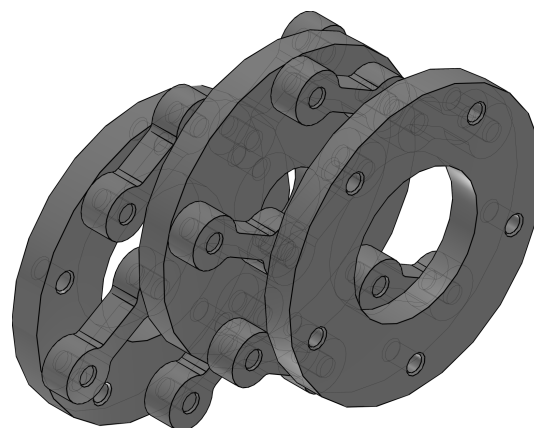
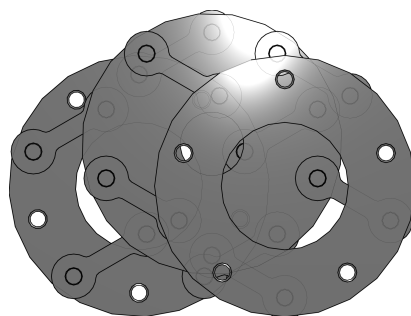
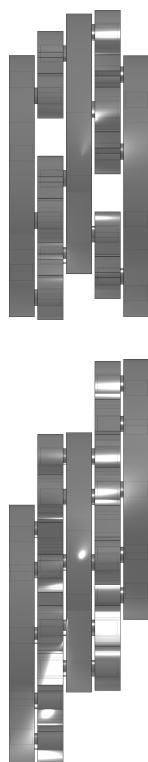
Reduce Your Costs in  
Engineering and Purchasing



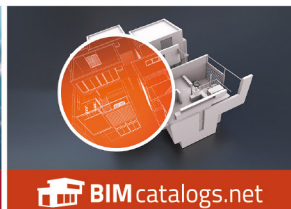
### SK 4.5.8/5

2D derivation

ISO View



## 3D PDF DATASHEET



Create Your Individual 3D PDF Datasheet



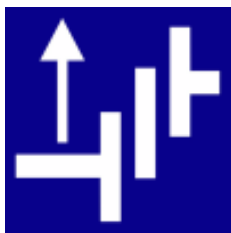
Learn How to Create Your Mechanical Product Catalog



Learn How to Create Your BIM Product Catalog

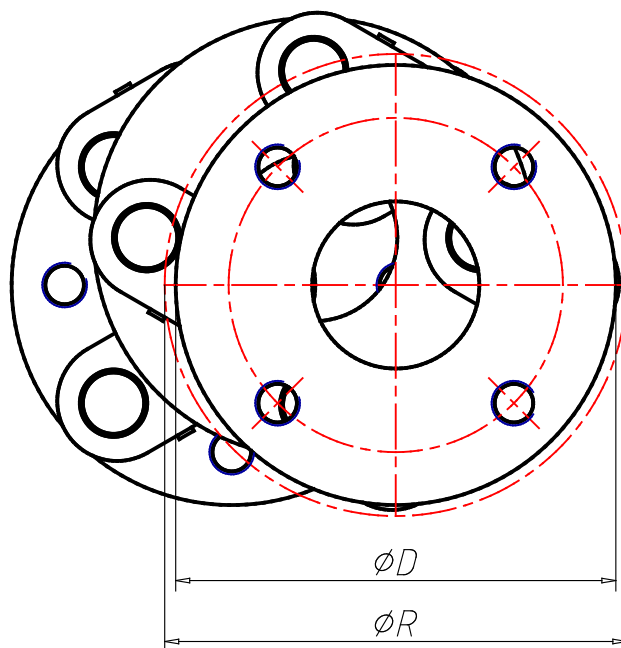
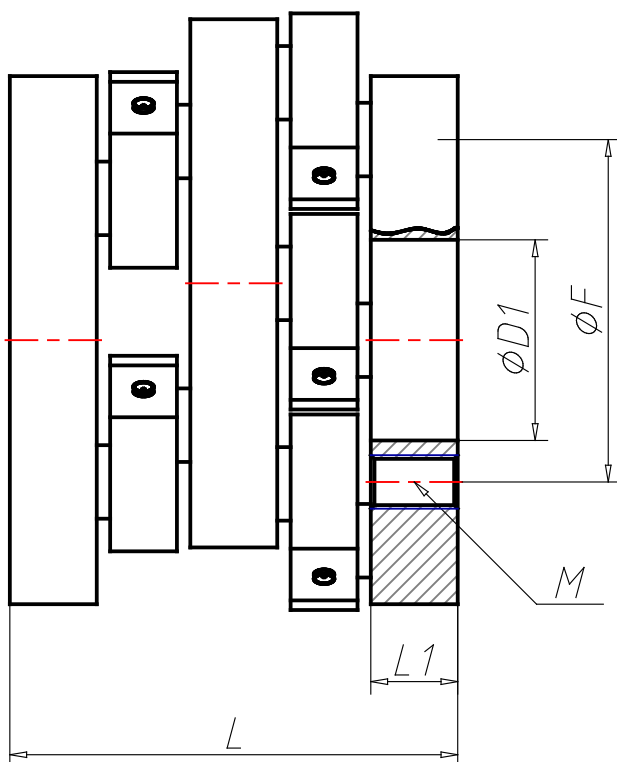


Reduce Your Costs in Engineering and Purchasing



SK 4.5.8/5

### Technical drawings



## 3D PDF DATASHEET

Create Your Individual 3D PDF Datasheet



eCATALOG solutions

Learn How to Create Your Mechanical Product Catalog



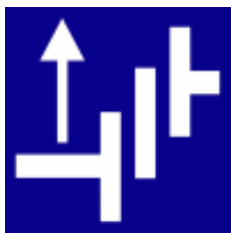
BIM catalogs.net

Learn How to Create Your BIM Product Catalog



PART solutions

Reduce Your Costs in Engineering and Purchasing



SK 4.5.8/5

## Technical Data

CNSORDERNO (Order number)	SK 4.5.8/5
KRMIN (Minimum radial offset capacity / mm)	13
KR (Maximum radial offset capacity / mm)	50
KV (Maximum linear range of the coupling / mm)	95
KW (Maximum angular misalignment capacity / °)	0.5
TKN (Continuous torque rating of the coupling / Nm)	110
TKMAX (Maximum torque capacity of the coupling / Nm)	210
MIN (Maximum speed of the coupling / 1/min)	1.600
CT (Torsional stiffness / kNm/rad)	24
D (Coupling diameter / mm)	82
R (Swing diameter / mm)	84
J (Moment of inertia / kg cm <sup>2</sup> )	9.1
CNSMASSEXACT (Weight / kg)	1.1
L (Coupling length / mm)	44
L1 (Disc thickness / mm)	8
F (Bolt circle diameter / mm)	67
D1 (Bore diameter / mm)	40
M (Quantity x size of the threaded holes)	5xM6

## 3D PDF DATASHEET

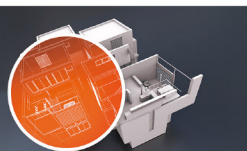


 **eCATALOG**solutions

Create Your Individual 3D PDF  
Datasheet



Learn How to Create Your  
Mechanical Product Catalog



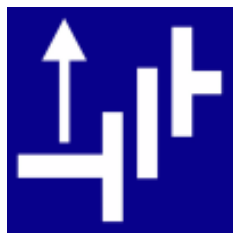
 **BIM** catalogs.net

Learn How to Create Your BIM  
Product Catalog



 **PART**solutions

Reduce Your Costs in  
Engineering and Purchasing



SK 4.5.8/5

### Bill of Materials

N°	Description	Amount
1	SK 4.5.8/5	1